

TiiP International Inc.
2-50 Alex Avenue
Woodbridge ON L4L5X1
Tel: 905-856-2634
Fax: 905-851-6877
sales@tiipinc.com
www.tiipinc.com

CORNER GUARD

CORNER GUARD

One piece stainless steel corner guard.
Available in 18 gauge 304 #4 Brush Stainless
Steel **OR** 20 gauge X-L Buff Stainless Steel
Mirror finish.

OPTIONS

Available up to 120" in height
Available with or without Eased Edge
Available with or without mounting holes

STOCK SIZES *

Wings Size			Length
1" (25.4mm)	x	1" (25.4mm)	Up to 120"
2" (50.8mm)	x	2" (50.8mm)	Up to 120"
3" (76.2mm)	x	3" (76.2mm)	Up to 120"
4" (101.6mm)	x	4" (101.6mm)	Up to 120"

* Custom Sizes Available



#4 Brush Stainless Steel



#4 Brush Stainless Steel



X-L Buff Stainless Steel

TiiP International Inc.

2-50 Alex Avenue
Woodbridge ON L4L5X1
Tel: 905-856-2634
Fax: 905-851-6877
sales@tiipinc.com
www.tiipinc.com

STAINLESS STEEL
CHANNEL FRAMED MIRROR

SERIES 850

CHANNEL FRAME

One piece frame formed of 3/8" (9.53mm) X 1/2" (12.7mm) X 3/8" (9.53mm) type T430 BA stainless steel. Frame has square, tightly mitered corners, with unique concealed screw fixings to ensure easy field mirror replacement. Plastic protective coating placed on frame.

MIRROR

No.1 selected polished 5 mm float glass with chemically deposited silver, electrolytically copper plated followed by a heavy coating of tough elastic paint. Mirrors conforming to CGSB 12.5-86 Type 1B and guaranteed against silver spoilage for a period of ten years.

STOCK SIZES *

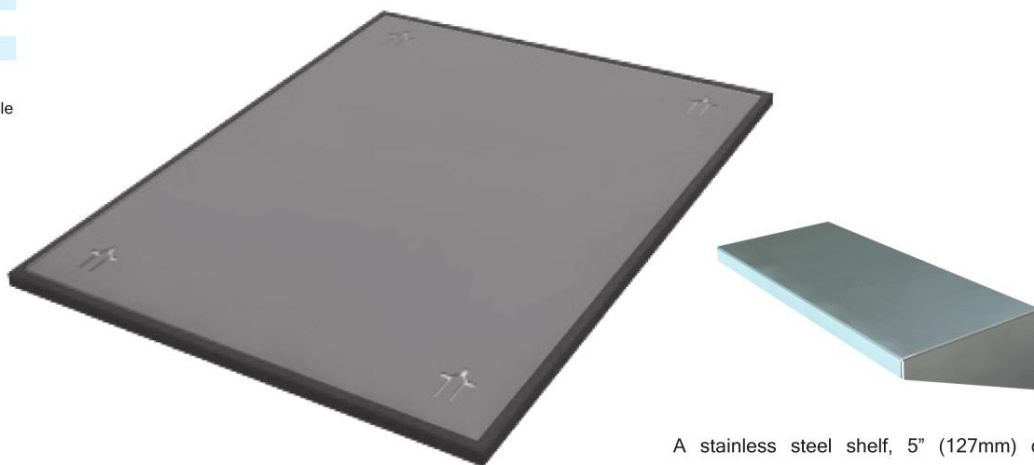
Width	Height
16" (406mm)	24" (609mm)
16" (406mm)	30" (761mm)
18" (457mm)	24" (609mm)
18" (457mm)	30" (761mm)
18" (457mm)	36" (914mm)
24" (609mm)	30" (761mm)
24" (609mm)	36" (914mm)

* Custom Sizes Available

Weight: 4 lbs / sq. ft (NOT BOXED)

GLAZING OPTIONS

Acrylic Mirror
Tempered Mirror
Laminated Mirror
Stainless Steel Mirror
6mm Mirror



A stainless steel shelf, 5" (127mm) deep is available for separate mounting below all mirrors.

TiiP International Inc.

2-50 Alex Avenue
Woodbridge ON L4L5X1

Tel: 905-856-2634

Fax: 905-851-6877

sales@tiipinc.com

www.tiipinc.com

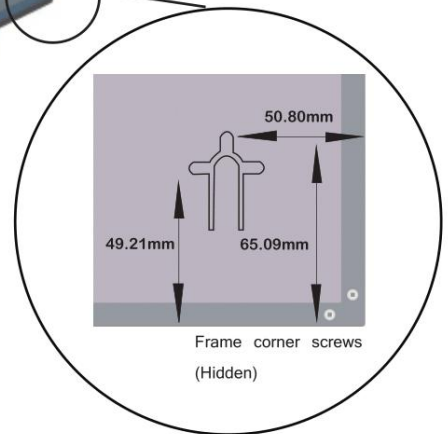
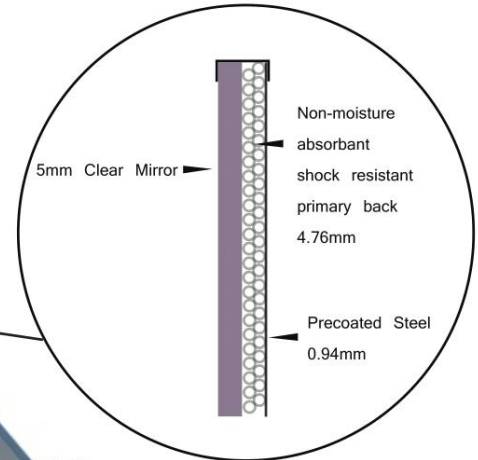
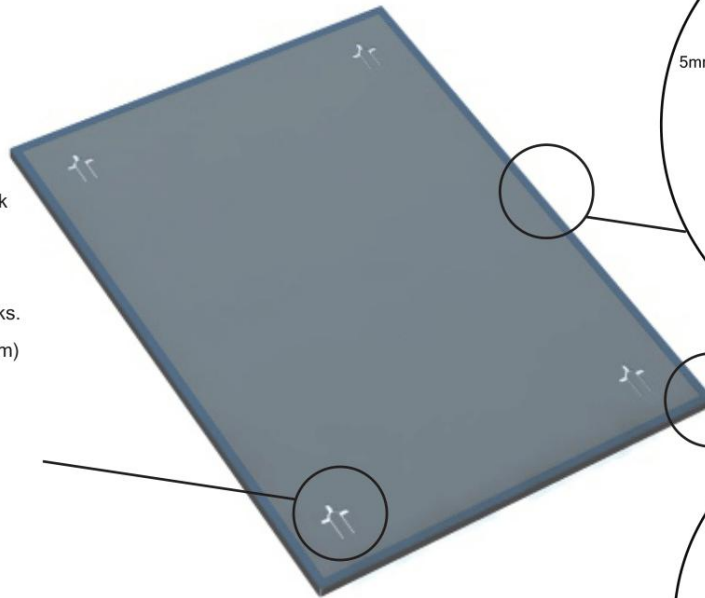
STAINLESS STEEL
CHANNEL FRAMED MIRROR

SERIES 850

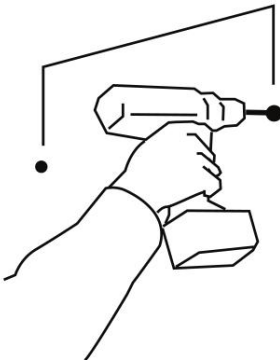
FEATURES

Mirror is protected with a 3/16" (4.76mm) non moisture absorbent shock resistant primary back. This material will not absorb or retain moisture and cushions the mirror by absorbing shocks. The secondary back is of 0.37" (.94mm) satin coat steel.

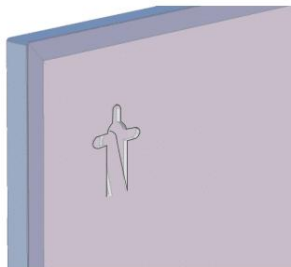
Three way keyhole slots, for either vertical or horizontal mounting, together with theft resistant clips assure a vandal resistant secure wall mounting.



INSTRUCTIONS



1. Mark on wall, and drill.



2. Clover Leaf tab will push in as mirror is pushed against screw in wall.



3. Once Mirror is against wall, push mirror down or sideways. Tab will then spring up to stop head of screw from coming back out of slot.

TiiP International Inc.

2-50 Alex Avenue
Woodbridge ON L4L5X1

Tel: 905-856-2634

Fax: 905-851-6877

sales@tiipinc.com

www.tiipinc.com

STAINLESS STEEL
CHANNEL FRAMED MIRROR

SERIES 850

FIXED
TILT

FIXED TILT FRAME

One piece frame formed of 3/8" (9.53mm)
X 1/2" (12.7mm) X 3/8" (9.53mm) type
T430 BA stainless steel. Frame has square,
tightly mitered corners, with unique concealed
screw fixings to ensure easy field mirror
replacement. Plastic protective coating placed
on frame.

MIRROR

No.1 selected polished 5 mm float glass with
chemically deposited silver, electrolytically copper
plated followed by a heavy coating of tough
elastic paint. Mirrors conforming to GSB
12-GD5A Type B and guaranteed against silver
spoilage for a period of ten years.

STOCK SIZES *

Width	Height
16" (406mm)	24" (609mm)
16" (406mm)	30" (761mm)
18" (457mm)	24" (609mm)
18" (457mm)	30" (761mm)
18" (457mm)	36" (914mm)
24" (609mm)	30" (761mm)
24" (609mm)	36" (914mm)

* Custom Sizes Available

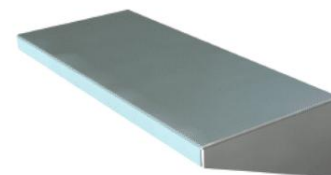
Weight: 5 lbs / sq. ft (NOT BOXED)

GLAZING OPTIONS

Acrylic Mirror
Tempered Mirror
Laminated Mirror
Stainless Steel Mirror
6mm Mirror



Back



A stainless steel shelf, 5" (127mm) deep
is available for separate mounting below
all mirrors.

TiiP International Inc.
2-50 Alex Avenue
Woodbridge ON L4L5X1
Tel: 905-856-2634
Fax: 905-851-6877
sales@tiipinc.com
www.tiipinc.com

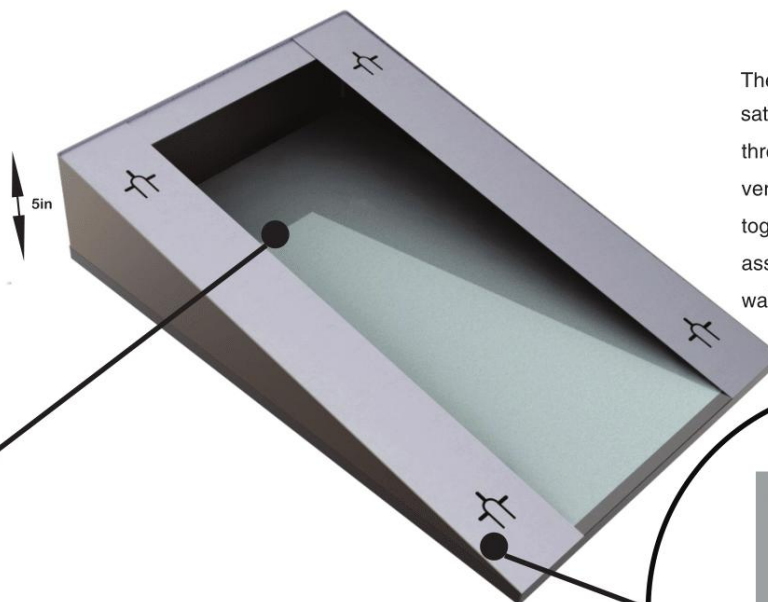
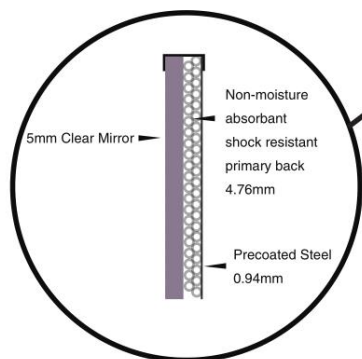
STAINLESS STEEL
 CHANNEL FRAMED MIRROR

SERIES 850

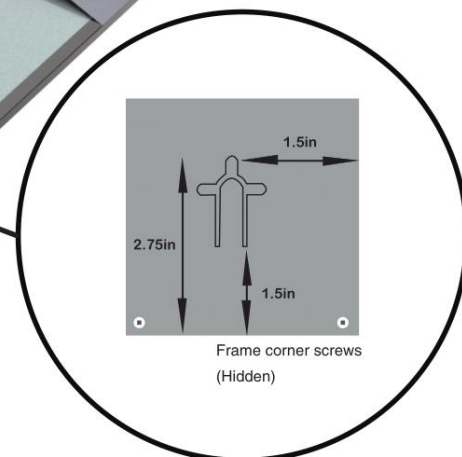
FIXED
TILT

FEATURES

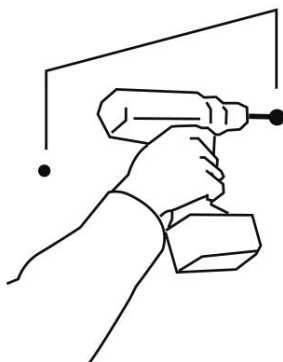
Mirror is protected with a 3/16" (4.76mm) non moisture absorbent shock resistant primary back. This material will not absorb or retain moisture and cushions the mirror by absorbing shocks. The secondary back is of 0.37" (.94mm) satin coat steel.



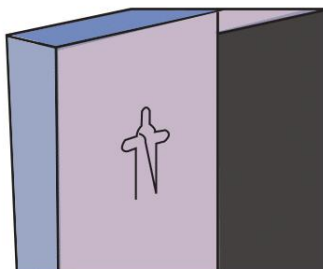
The back is constructed with 24 GA satine coated stainless steel. The three way keyhole slots, for either vertical or horizontal mounting, together with theft resistant clips assure a vandal resistant secure wall mounting.



INSTRUCTIONS



1. Mark on wall, and drill.



2. Clover Leaf tab will push in as mirror is pushed against screw in wall.



3. Once Mirror is against wall, push mirror down or sideways. Tab will then spring up to stop head of screw from coming back out of slot.

TiiP International Inc.
2-50 Alex Avenue
Woodbridge ON L4L5X1
Tel: 905-856-2634
Fax: 905-851-6877
sales@tiipinc.com
www.tiipinc.com

STAINLESS STEEL
 ANGLE FRAMED MIRROR

SERIES 3200

ANGLE FRAME

Frame is rigidly formed of 3/4" (19mm) X 5/8" (16mm) type 304, 18 gauge #4 brush finished stainless steel. All mitered corners are heliarc welded, ground smooth, and polished to #4 brush finish.

MIRROR

No.1 selected polished 5mm float glass with chemically deposited silver, electrolytically copper plated followed by a heavy coating of tough elastic paint. Mirrors conforming to CGSB 12.5-86 Type 1B, and guaranteed against silver spoilage for a period of ten years.

STOCK SIZES*

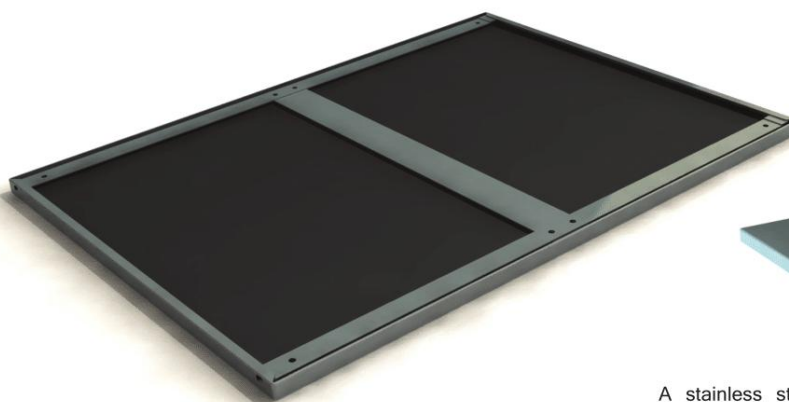
Width	Height
16" (406mm)	24" (609mm)
16" (406mm)	30" (761mm)
18" (457mm)	24" (609mm)
18" (457mm)	30" (761mm)
18" (457mm)	36" (914mm)
24" (609mm)	30" (761mm)
24" (609mm)	36" (914mm)

* Custom Sizes Available

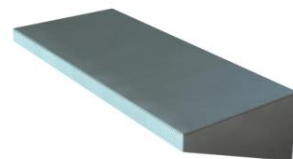
Weight: 5 lbs / sq. ft (NOT BOXED)

GLAZING OPTIONS

Acrylic Mirror
 Tempered Mirror
 Laminated Mirror
 Stainless Steel Mirror
 6mm Mirror



*BACK



A stainless steel shelf, 5" (127mm) deep, welded and polished is available for separate mounting below all mirrors.

TiiP International Inc.
 2-50 Alex Avenue
 Woodbridge ON L4L5X1
 Tel: 905-856-2634
 Fax: 905-851-6877
 sales@tiipinc.com
 www.tiipinc.com

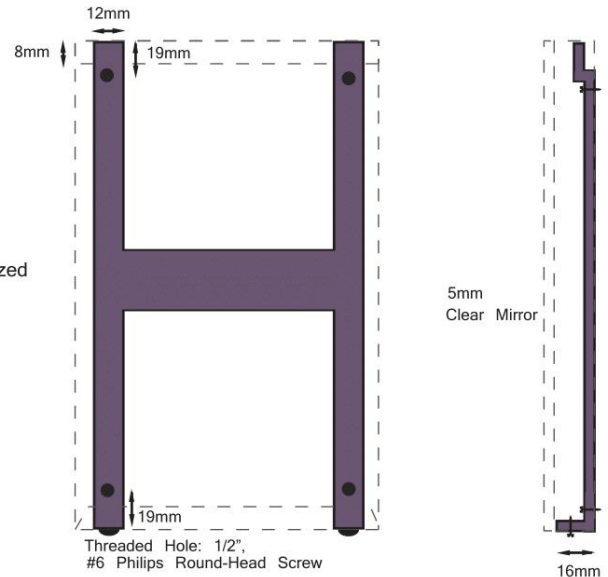
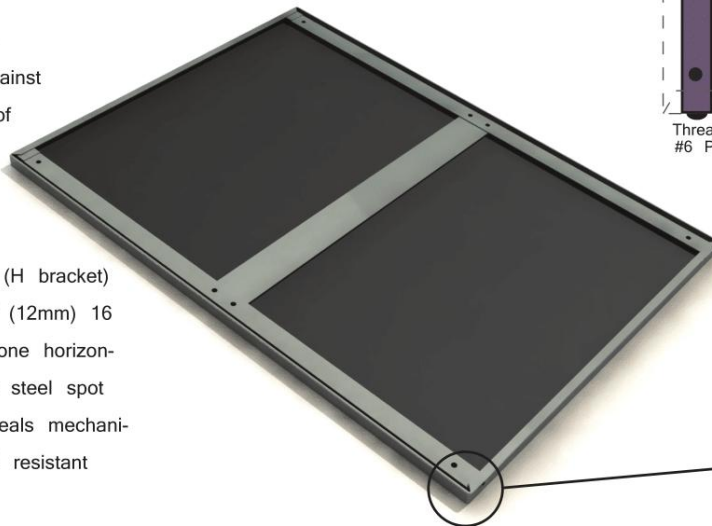
STAINLESS STEEL
 ANGLE FRAMED MIRROR

SERIES 3200

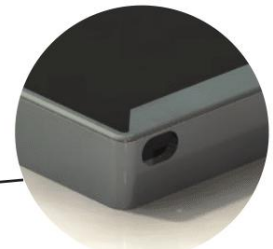
FEATURES

No.1 selected polished 5mm float glass with chemically deposited silver, electrolytically copper plated followed by a heavy coating of tough elastic paint. Mirrors conforming to CGSB 12.5-86 Type 1B, and guaranteed against silver spoilage for a period of ten years.

Mirrors to be taped, siliconed, suspension glazed with PVC blocks to have a minimum 3/8" (10mm) back free air space.



Newly designed wall hanger (H bracket) formed of two verticals, 1/2" (12mm) 16 gauge satin coat steel and one horizontal, 1-1/2" (36mm) 24 gauge steel spot welded together. Fully conceals mechanical fixings assuring a vandal resistant secure wall mounting.



Screw Slots
 (smaller than head of screw)

INSTRUCTIONS



1. Screw H bracket to wall.



2. Place top of mirror frame over top tabs of H bracket.



3. Screw bottom H bracket screws up until mirror frame fits over screws. Insert thin screw driver up through bottom holes in mirror frame and back H bracket, screw down until tight.

TiiP International Inc.
2-50 Alex Avenue
Woodbridge ON L4L5X1
Tel: 905-856-2634
Fax: 905-851-6877
sales@tiipinc.com
www.tiipinc.com

FIXED TILT STAINLESS STEEL
ANGLE FRAMED MIRROR
SERIES 3200

Fixed
Tilt

ANGLE FRAME

Frame is rigidly formed of 3/4" (19mm) X 5/8" (16mm) type 304, 18 gauge #4 brush finished stainless steel. All mitered corners are heliarc welded, ground smooth, and polished to #4 brush finish.

MIRROR

No.1 selected polished 5mm float glass with chemically deposited silver, electrolytically copper plated followed by a heavy coating of tough elastic paint. Mirrors conforming to CGSB 12.5-86 Type 1B, and guaranteed against silver spoilage for a period of ten years.

STOCK SIZES *

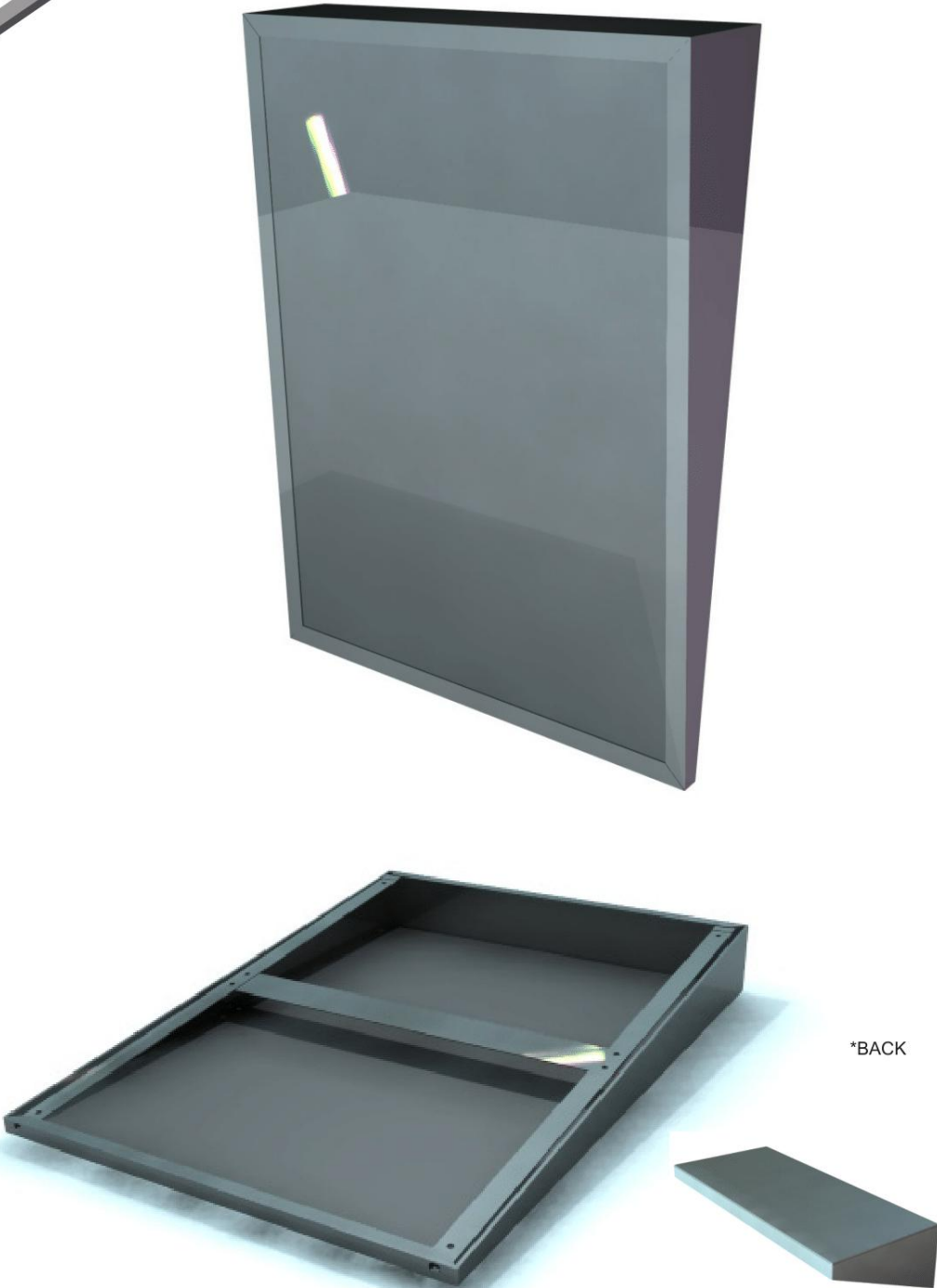
Width	Height
16" (406mm)	24" (609mm)
16" (406mm)	30" (761mm)
18" (457mm)	24" (609mm)
18" (457mm)	30" (761mm)
18" (457mm)	36" (914mm)
24" (609mm)	30" (761mm)
24" (609mm)	36" (914mm)

* Custom Sizes Available

Weight: 5 lbs / sq. ft (NOT BOXED)

GLAZING OPTIONS

- Acrylic Mirror
- Tempered Mirror
- Laminated Mirror
- Stainless Steel Mirror
- 6mm Mirror



A stainless steel shelf, 5" (127mm) deep welded and polished with integral brackets is available for separate mounting below all mirrors.

TiiP International Inc.
2-50 Alex Avenue
Woodbridge ON L4L5X1
Tel: 905-856-2634
Fax: 905-851-6877
sales@tiipinc.com
www.tiipinc.com

FIXED TILT STAINLESS STEEL
 ANGLE FRAMED MIRROR

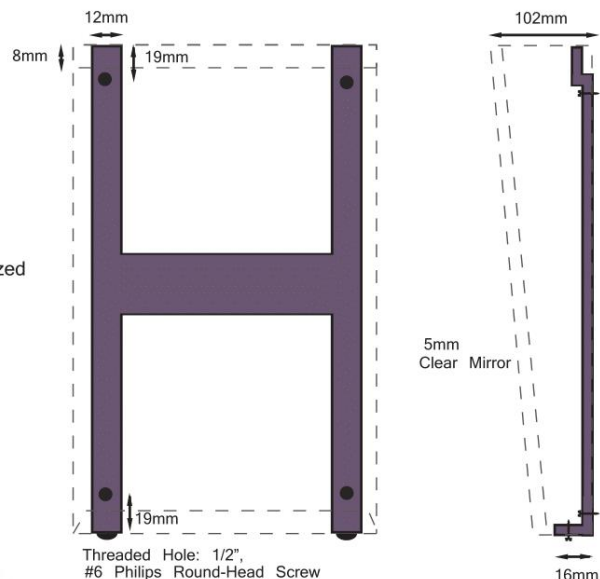
SERIES 3200

Fixed
Tilt

FEATURES

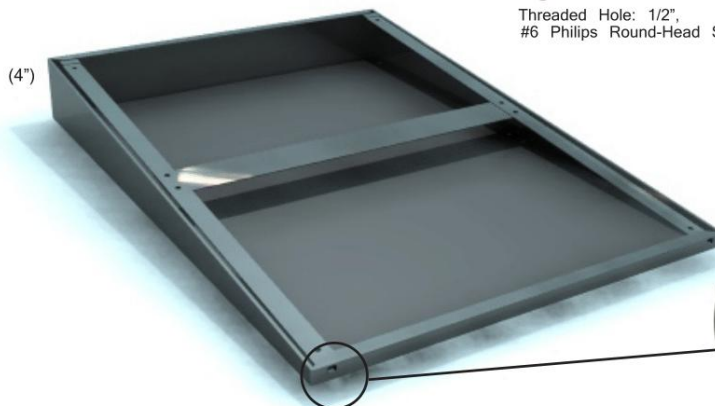
No.1 selected polished 5mm float glass with chemically deposited silver, electrolytically copper plated followed by a heavy coating of tough elastic paint. Mirrors conforming to CGSB 12.5-86 Type 1B, and guaranteed against silver spoilage for a period of ten years.

Mirrors to be taped, siliconed, suspension glazed with PVC blocks to have a minimum 3/8" (10mm) back free air space.



102mm (4")
TILT

Newly designed wall hanger (H bracket) formed of two verticals, 1/2" (12mm) 16 gauge satin coat steel and one horizontal, 1-1/2" (38mm) 24 gauge steel spot welded together. Fully conceals mechanical fixings ensuring a vandal resistant secure wall mounting.



Screw Slots
(Smaller than
head of screw)

INSTRUCTIONS



1. Screw H bracket to wall.



2. Place top of mirror frame over top tabs of H bracket.



3. Screw bottom H bracket screws up until mirror frame fits over screws. Insert thin screw driver up through bottom holes in mirror frame and back H bracket, screw down until tight.

TiiP International Inc.

2-50 Alex Avenue

Woodbridge ON L4L5X1

Tel: 905-856-2634

Fax: 905-851-6877

sales@tiipinc.com

www.tiipinc.com

INDOOR CONVEX
DETECTION MIRROR

SERIES

PVV

CONVEX FRAME

Provides a wide angled view to see around corners and hidden areas. Helps to reduce accidents and discourages shoplifting. Recommended to be used for locations where glass mirrors might prove hazardous, as in food processing plants, hospitals, schools institutions and retail stores. Fully adjustable to almost any angle, these mirrors add further security and safety to all retail institutional and industrial applications.

MIRROR

Made from 3mm acrylic. Recommended in locations where glass mirror may not be desired. Convex shape provides panoramic view.

STOCK SIZES

Diam.	Distance Covered
12 " DIA	10 ft.
18 " DIA	25 ft.
24 " DIA	35 ft.
26 " DIA	40 ft.
30 " DIA	45 ft.
36 " DIA	50 ft.

Weight: 4 lbs / sq. ft (NOT BOXED)



Comes Complete (All Hardware) less mounting screws.

TiiP International Inc.

2-50 Alex Avenue
Woodbridge ON L4L5X1

Tel: 905-856-2634

Fax: 905-851-6877

sales@tiipinc.com

www.tiipinc.com

INDOOR CONVEX
DETECTION MIRROR

SERIES

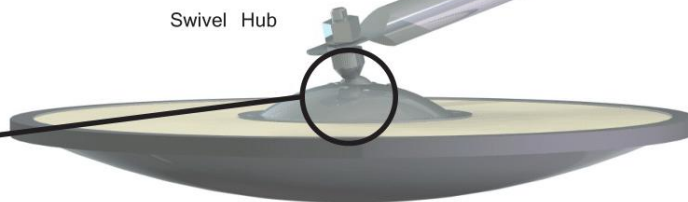
PVV

FEATURES

Manufactured with fiberboard backing and sealed edge to protect mirror. Installation hardware includes telescopic arm, swivel hub, and mounting bracket.



Swivel Hub



Mounting bracket attaches to ceiling or wall

INSTRUCTIONS



1. Mount arm(s) in desired location.
Requires 4 ea #8 screws.



2. Attach arm to swivel ball on hub.



3. Back off 1 or 2 screws on hub, **1/2 turn only**. Adjust angle of mirror, retighten hub screws.