

TiiP International Inc.
2-50 Alex Avenue
Woodbridge ON L4L5X1
Tel: 905-856-2634
Fax: 905-851-6877
sales@tiipinc.com
www.tiipinc.com

FIXED TILT STAINLESS STEEL
ANGLE FRAMED MIRROR
SERIES 3200

Fixed
Tilt

ANGLE FRAME

Frame is rigidly formed of 3/4" (19mm) X 5/8" (16mm) type 304, 18 gauge #4 brush finished stainless steel. All mitered corners are heliarc welded, ground smooth, and polished to #4 brush finish.

MIRROR

No.1 selected polished 5mm float glass with chemically deposited silver, electrolytically copper plated followed by a heavy coating of tough elastic paint. Mirrors conforming to CGSB 12.5-86 Type 1B, and guaranteed against silver spoilage for a period of ten years.

STOCK SIZES *

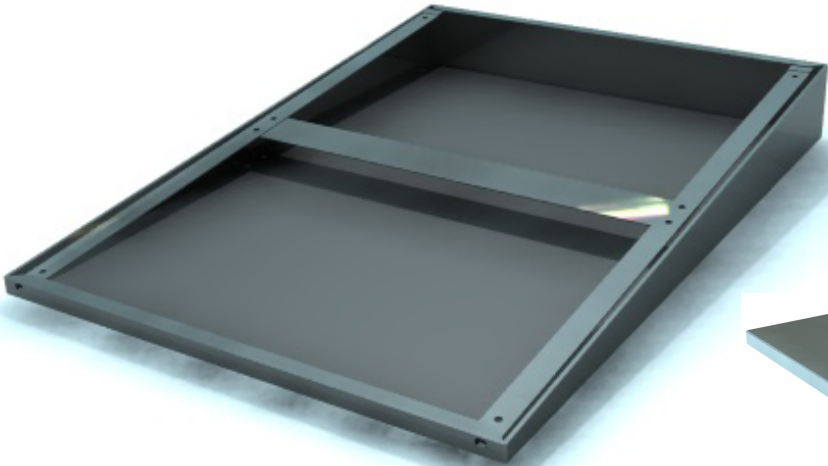
Width	Height
16" (406mm)	24" (609mm)
16" (406mm)	30" (761mm)
18" (457mm)	24" (609mm)
18" (457mm)	30" (761mm)
18" (457mm)	36" (914mm)
24" (609mm)	30" (761mm)
24" (609mm)	36" (914mm)

* Custom Sizes Available

Weight: 5 lbs / sq. ft (NOT BOXED)

GLAZING OPTIONS

- Acrylic Mirror
- Tempered Mirror
- Laminated Mirror
- Stainless Steel Mirror
- 6mm Mirror



*BACK

A stainless steel shelf, 5" (127mm) deep welded and polished with integral brackets is available for separate mounting below all mirrors.

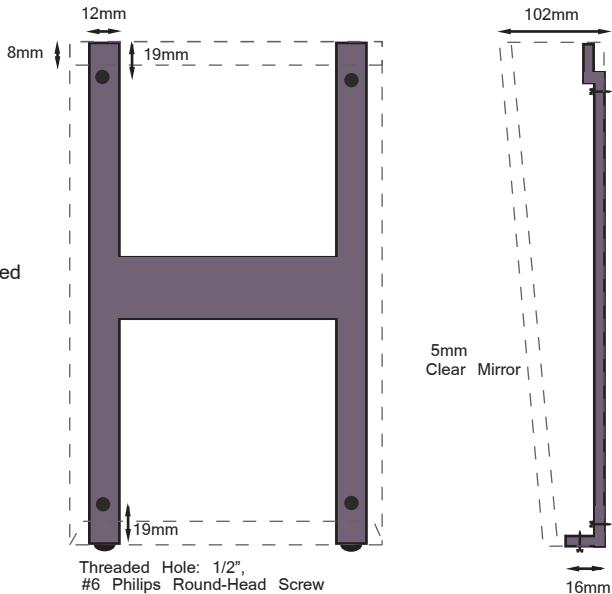
TiiP International Inc.
2-50 Alex Avenue
Woodbridge ON L4L5X1
Tel: 905-856-2634
Fax: 905-851-6877
sales@tiipinc.com
www.tiipinc.com

FIXED TILT STAINLESS STEEL
ANGLE FRAMED MIRROR
SERIES 3200 Fixed Tilt

FEATURES

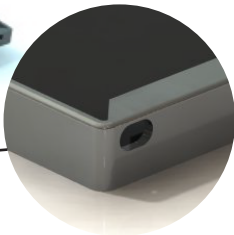
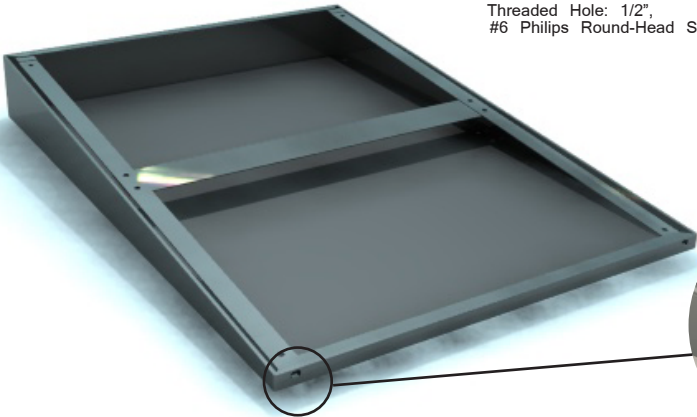
No.1 selected polished 5mm float glass with chemically deposited silver, electrolytically copper plated followed by a heavy coating of tough elastic paint. Mirrors conforming to CGSB 12.5-86 Type 1B, and guaranteed against silver spoilage for a period of ten years.

Mirrors to be taped, siliconed, suspension glazed with PVC blocks to have a minimum 3/8" (10mm) back free air space.



102mm (4")
TILT

Newly designed wall hanger (H bracket) formed of two verticals, 1/2" (12mm) 16 gauge satin coat steel and one horizontal, 1-1/2" (38mm) 24 gauge steel spot welded together. Fully conceals mechanical fixings ensuring a vandal resistant secure wall mounting.

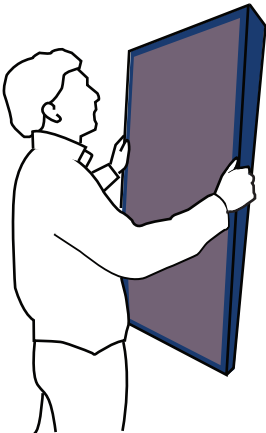


Screw Slots
(Smaller than head of screw)

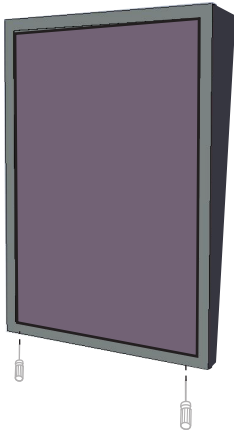
INSTRUCTIONS



1. Screw H bracket to wall.



2. Place top of mirror frame over top tabs of H bracket.



3. Screw bottom H bracket screws up until mirror frame fits over screws. Insert thin screw driver up through bottom holes in mirror frame and back H bracket, screw down until tight.